

Example 7: ball impact

Objective: Observe the delamination and in-plate failure in laminate.

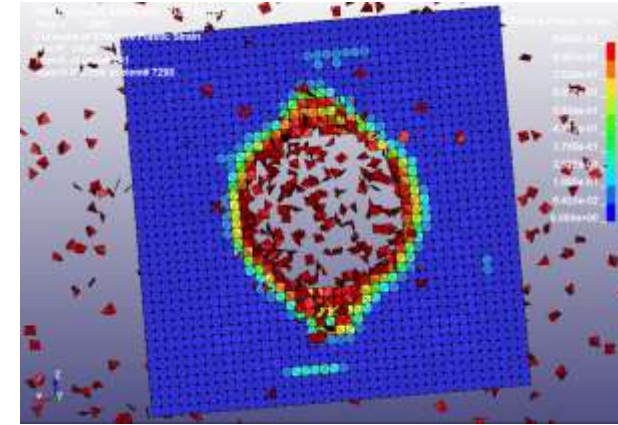
Filename: *ex7ball_impact.k*

Description:

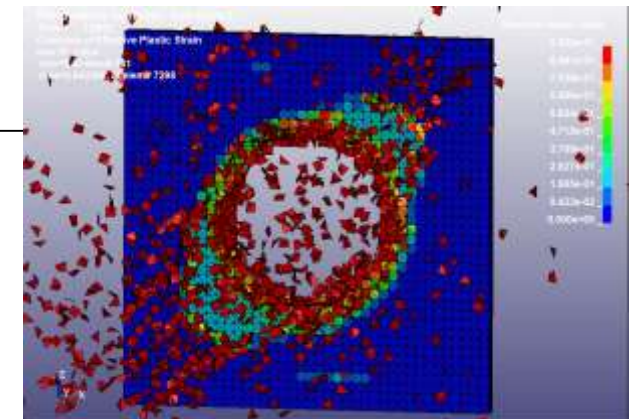
A laminate plate is impacted by a rigid ball. Complex damage patterns are formed in the plate automatically.

You are expected to do the following studies by *beta version of executable* :

1. Copy *ex7ball_impact.k* to directory example7.
2. Obtain the results.
3. In ls-prepost, click **Fringe Component** -> **effective plastic strain**. Here the effective plastic strain indicates the damage value in peridynamics. Play the animation.
4. In ls-prepost, click **Fringe Component** -> **Misc-> History Var #1** for inplate damage and Var#2 for delamination.



Damage pattern, top view



Damage pattern, bottom view