

LS-DYNA® Advanced FEM, Meshfree & Particle Methods

Material Design & Manufacturing

Mechanical performance of material:

- Composite material modeling in multiple scales
- Bottom-up material data processing

Features:

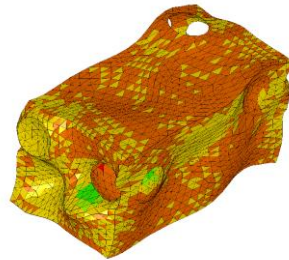
- Representative volume element (RVE)
- Reduced-order homogenization
- Deep material network (machine learning)

Manufacturing analysis:

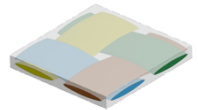
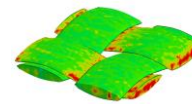
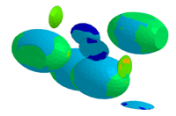
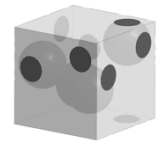
- Bulk forming: forging, extrusion
- Machining: cutting, shearing, polishing
- Joining: riveting, welding, drilling
- Brittle, ductile and rubber-like materials
- 3D printing process and performance test

Features:

- Multiple advanced numerical tools
- Element free Galerkin (EFG)
- Meshfree-enriched FEM (ME-FEM)
- Smoothed particle Galerkin (SPG)
- Smoothed particle hydrodynamics (SPH)
- Peridynamics
- eXtended FEM (X-FEM)
- 2D and 3D (shell & solid)
- Particle immerse
- Explicit and Implicit analysis
- Coupled thermal mechanical analysis
- Adaptive re-meshing
- Physics-based failure model

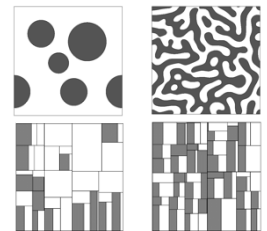
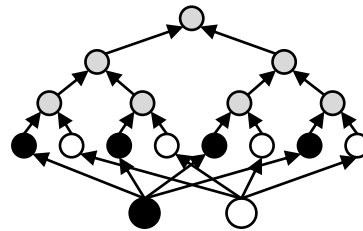


Nano-particle reinforced rubber

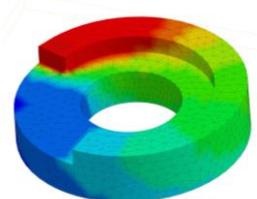
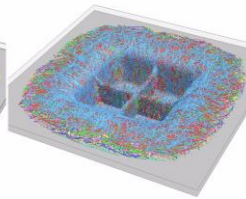
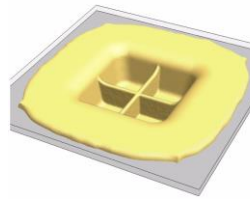


RVE package

RVE analysis (Virtual material test module)



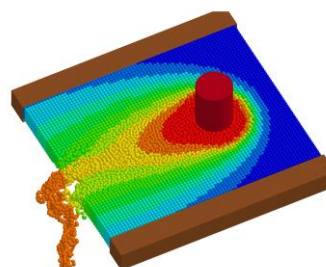
Homogenization (Model reduction & deep material network)



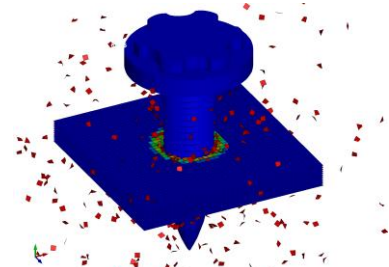
Composite compression molding

3D printing (PBF)

Coupled thermal-mechanical analysis (EFG adaptivity)



Friction stir welding (SPH)

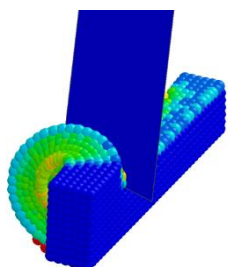


CFRP drilling (Peridynamics)

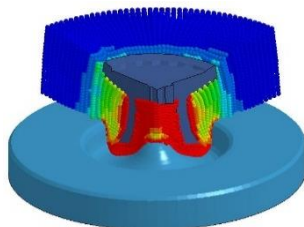


LSTC
Livermore Software
Technology Corp.

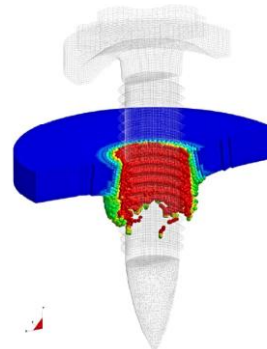
www.lstc.com



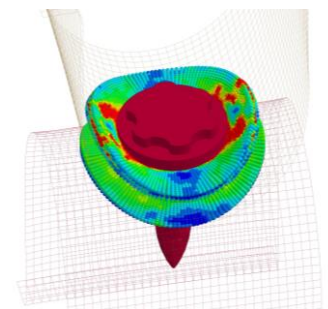
Metal cutting



Riveting



Flow drill screw: metal drilling process & tearing



Material failure analysis (SPG and particle immerse)

LS-DYNA® Advanced FEM, Meshfree & Particle Methods

Structural Analysis and Impact/Penetration

Structural Analysis:

- Virtual mechanical testing
- Manufacturing-induced structural response
- Material failure characterization

Features:

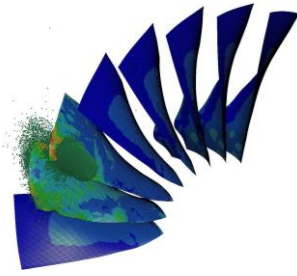
- Model building and showing by LS-Pre/Post
- Failure analysis in base materials including brittle, semi-brittle and ductile fracture
- Failure analysis in CFRP including delamination, in-plane failure and their interaction
- Failure analysis in various joints including spot weld, bolt, screw, FDS, SPR

Impact/penetration:

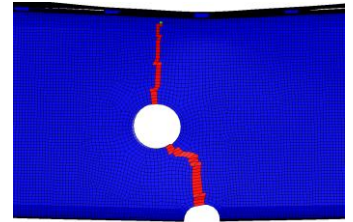
- High strain rate and high momentum
- Large and extreme deformation
- Material failure, separation and fragmentation
- Secondary damage induced by debris

Features:

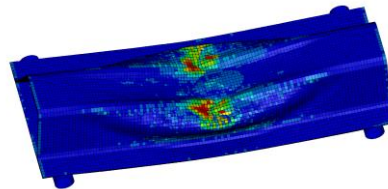
- Galerkin particle formulation with Lagrangian kernel for convergence and stability
- Bond failure mechanism for material failure without material deletion
- Bond failure criteria calculated by phenomenological material laws
- Self-contact algorithm to deal with interaction of failed particles



Bird striking engine blades (SPH)



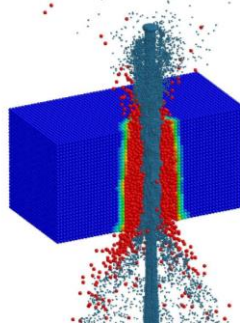
Metal 3-point bending (X-FEM shell)



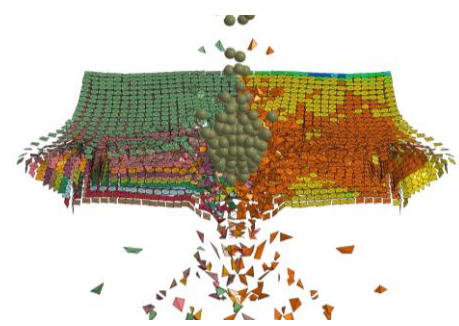
CFRP 3-point bending (Peridynamics)



Ball impact on CFRP (Peridynamics)



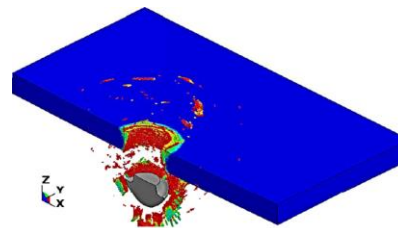
Water jet impacting concrete block (SPH-SPG)



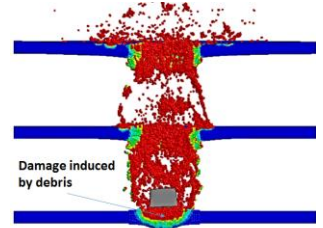
Bird striking CFRP laminate (SPH-Peridynamics)



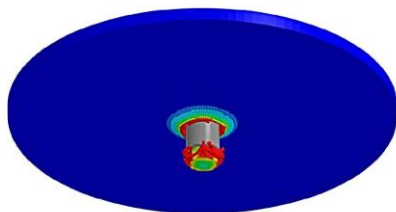
www.lstc.com



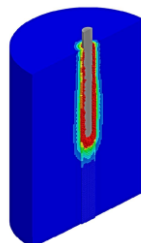
Perforation of aluminum slab



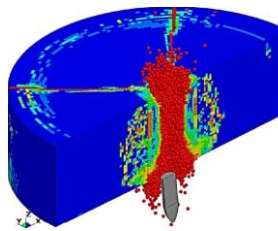
Perforation of steel plates



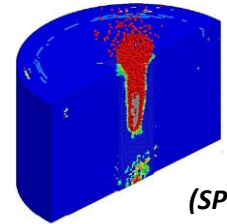
Impact plugging



Penetration of steel cylinder



Perforation of thin concrete cylinder



Penetration of thick concrete cylinder (SPG)

For information about 30-day LS-DYNA demo license email: sales@lstc.com